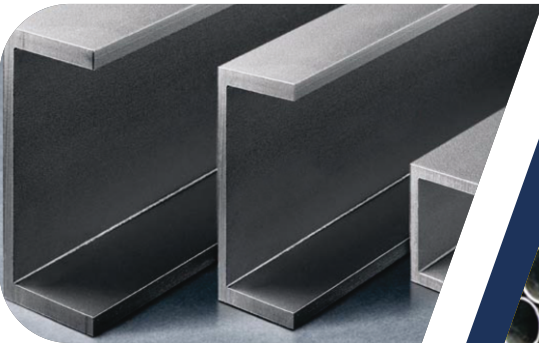
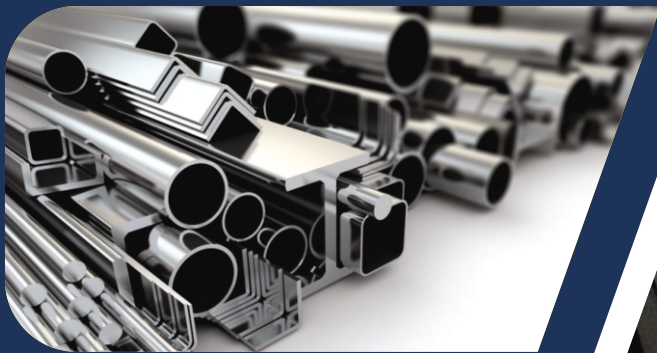
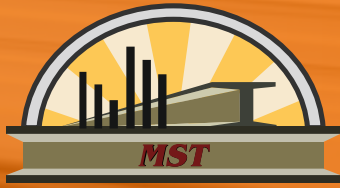




Mufaddal Steel Trading



www.mufaddalsteel.com



Mufaddal Steel Trading

We Believe in Quality

Our Vision : The ever changing need of clients at any level no matter in domestic or international you just need professional and reliable support from your suppliers at all times. At **Mufaddal Steel Trading (MST)** we understand the complex and other challenges faced by you, An urgent request, special order, or any of purchase we will help you. Our view and experience means that we can proudly claim that you can count on MST.



About Us

Our Firm is a well-established Steel and Building Material products Trading Company in the U.A.E. committed to the highest levels of customer services and quality. We are in the business of Exporting, Importing and Supplying of all types of Structural Steel and Building Material.

We export the finest grade of products like Galvanized & Black Steel Angles, Channels, Pipes, Tubes, H.R., C.R., Sheets & Coils, Structural Beams, Mesh, Gratings and other General Hardware.

Since its inception in 2008, **MUFADDAL STEEL TRADING L.L.C.** have continually exceeded product Standards and reach in the Middle East, Africa, Asia, Europe and the sub-continent.

MS & GI Angles & Channels

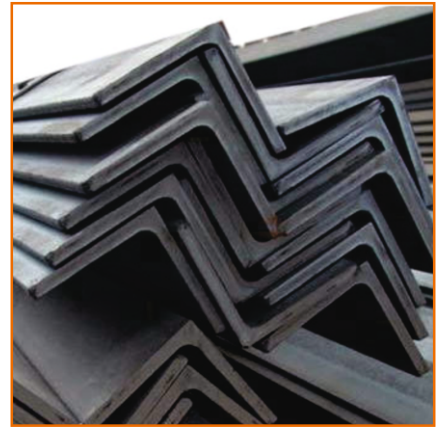
STEEL CHANNELS

Size	JIS Channels 75x40 - 380x100 UPN 40 - UPN 400 PFC 100x50 - 430x100
Standard	GB/T 706:2008, JIS G3192:2006 EN10279:2000, UNE-EN10025:1994
Steel Grade	Q2358, Q3458, SS400, S235JR/ST37-2 S355JR/ST52-3



STEEL ANGLES

Size	20mmx20mm-250mmx250mm
Standard	GB/T 9787/88, JIS G 3192-2006 EN 10056
Steel Grade	Q235B, Q345B, SS400, SS490, S235JR/ST37-2, S355JR/ST52-3



STEEL UNEQUAL ANGLES

Size	65mmx50mm-200mmx150mm
Standard	GB/T 9787/88, JIS G 3192-2006 EN 10056
Steel Grade	Q235B, Q345B, SS400, SS490, S235JR/ST37-2, S355JR/ST52-3



Pipes & Tubes

STRUCTURAL STEEL PIPES

Size	OD 21.3mm-609.6mm
Standard	ASTM A500, GB/T 3091
Steel Grade	GR-A, GR-B, Q195, Q235, Q345, Q420, Q460



ERW & SEAMLESS PIPES

Size	½" NB - 16" NB
Standard	API 5L, GB/T 9711
Steel Grade	ASTM A-53 A-135, A-500, A-513, A-523, A-847 A-984 API 5L IS-1161, 1239, 1978, 3589 BS-1387, BS-1339 & DIN.



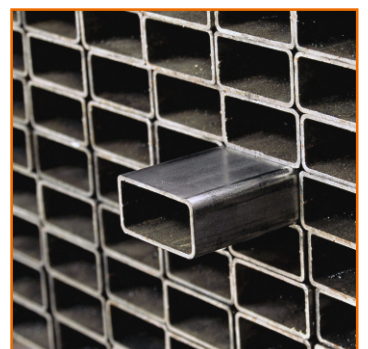
GALVANIZED PIPE

Size	OD 21.3mm-609.6mm
Standard	IS 1239, BS 1387, ASTM A53
Steel Grade	GR-A, GR-B, Q195, Q235, Q345, Q420, Q460



SQUARE & RECTANGULAR TUBES

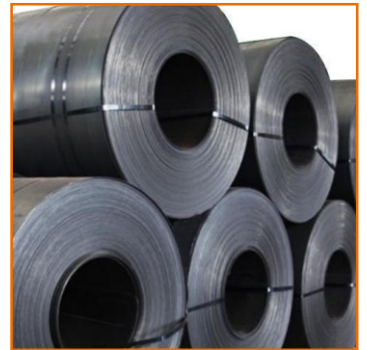
Size	SHS 12X12 - 250X250 RHS 40X20 - 250X100
Standard	JIS G3466, S355 J2H EN 10025
Steel Grade	GR-A, GR-B, Q195, Q235, Q345, Q420, Q460



Sheets & Coils

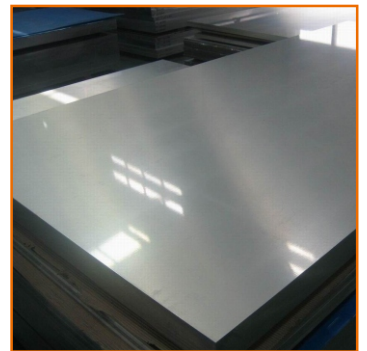
MS & GI COILS

Size	0.30mm - 4.00mm
Standard	ASTM A653(M), JIS G3302, EN1348, EN10326, EN10327, DIN17162
Steel Grade	SGCC, SGCD1, SGC340, SGC570, A36, CS(A,B,C) FS(A,B), Grade 33-80, ST012-ST052



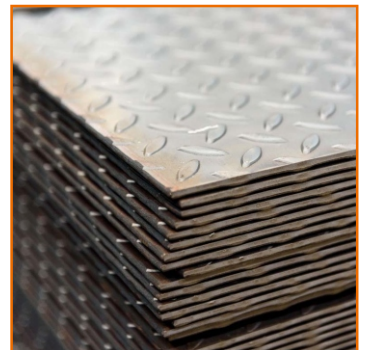
MS & GI SHEETS

Size	0.30mm - 5.00mm
Standard	ASTM A653(M), JIS G3302, EN1348, EN10326, EN10327, DIN17162
Steel Grade	SGCC, SGCD1, SGC340, SGC570, A36, CS(A,B,C) FS(A,B), Grade 33-80, ST012-ST052



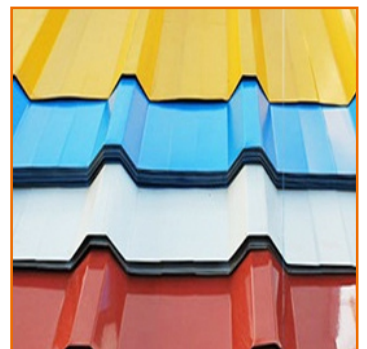
MS & GI CHEQUERD SHEETS

Size	1.50mm - 12.00mm
Standard	ASTM, JIS, BS, EN, DIN
Steel Grade	SS400, A36, 275JR



PPGI

Size	Thickness 0.28-1.5mm
Standard	JIS G3312, ASTM A653M, EN10327, GB/T12754
Steel Grade	CGCC, CS(A,B,C) DX51D, 5250-550GD, CGICC



SS SHEETS

ALUMINIUM SHEETS

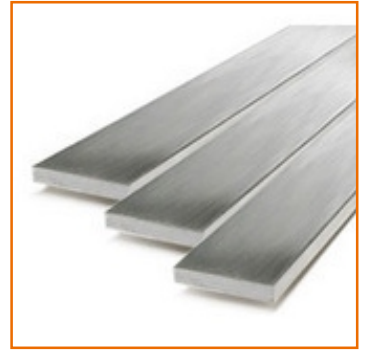
HOT ROLLED SHEETS

COLD ROLLED SHEETS

Bars

FLAT BARS

Size 12X3 - 200X10
Standard DIN EN 10058:2004
Steel Grade EN10025 S275 JR / ASTM A36



ROUND BARS

Size 4mm - 100mm
Standard DIN EN 10060:2004
Steel Grade EN10025-1:2004 S275 JR / ASTM A36



SQUARE BARS

Size 12x12 - 100x100
Standard DIN EN 10059:2004
Steel Grade EN10025:2004 S275 JR / ASTM A36



DEFORMED BARS

Size 6mm - 36mm
Standard BS4449/1997,2005
Steel Grade 460B



PRIME BRIGHT BARS NON ALLOY SHAFTING BARS

Steel Beams

UNIVERSAL BEAMS (UB)

UNIVERSAL COLUMNS (UC)

UNIVERSAL BEARING PILES

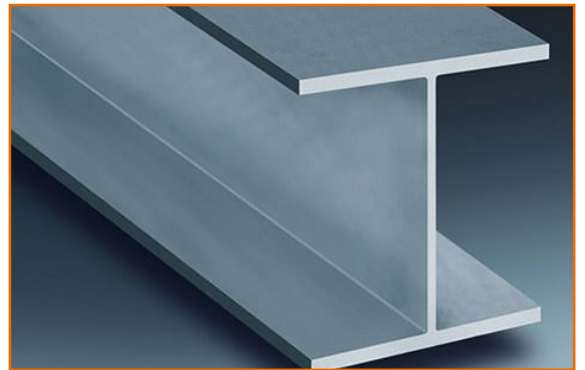
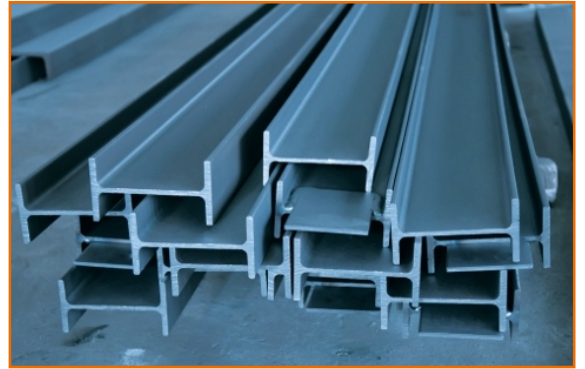
AMERICAN WIDE FLANGE
BEAMS (W-SECTION)

EUROPEAN FLANGE BEAMS
(HE-SECTION)

EUROPEAN I BEAMS (IPE-SECTION)

EUROPEAN I BEAMS (IPN-SECTION)

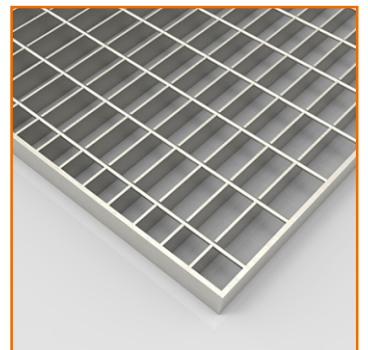
JAPANESE WIDE FLANGE BEAMS



Gratings & Mesh

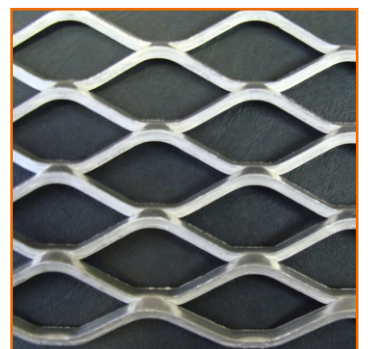
GI GRATINGS

Size	905mm x 6000mm Thickness 25x3 - 50x6
Standard	Available as per request
Steel Grade	Commercial



EXPANDED MESH

Size	1219mm x 2438mm Thickness 1.8mm - 10mm
Standard	JIS
Steel Grade	JIS G3351





Mufaddal Steel Trading

MST is “Your Full Service Distributor of Steel and Hardware Products”

We are committed & capable to fulfill immediate demand as our stock hugely to satisfy clients need and our professional team is dedicated to meet the time deadline of projects. We have paid a serious attention in order to raise the quality of services in every aspect with affordable prices offered to our customers.



Mufaddal Steel Trading

ADD. : AL QUOZ IND. 4, DUBAI - U.A.E.
P.O.BOX. 378690

PH : 04-3791100

FAX : 04-3791158

E-mail : info@mufaddalsteel.com

Mufaddal Steel Trading LLC (Branch - Abu Dhabi)

ADD. : Behind Al Ghurair Steel,
Musaffah - MW5, Plot # TMP1

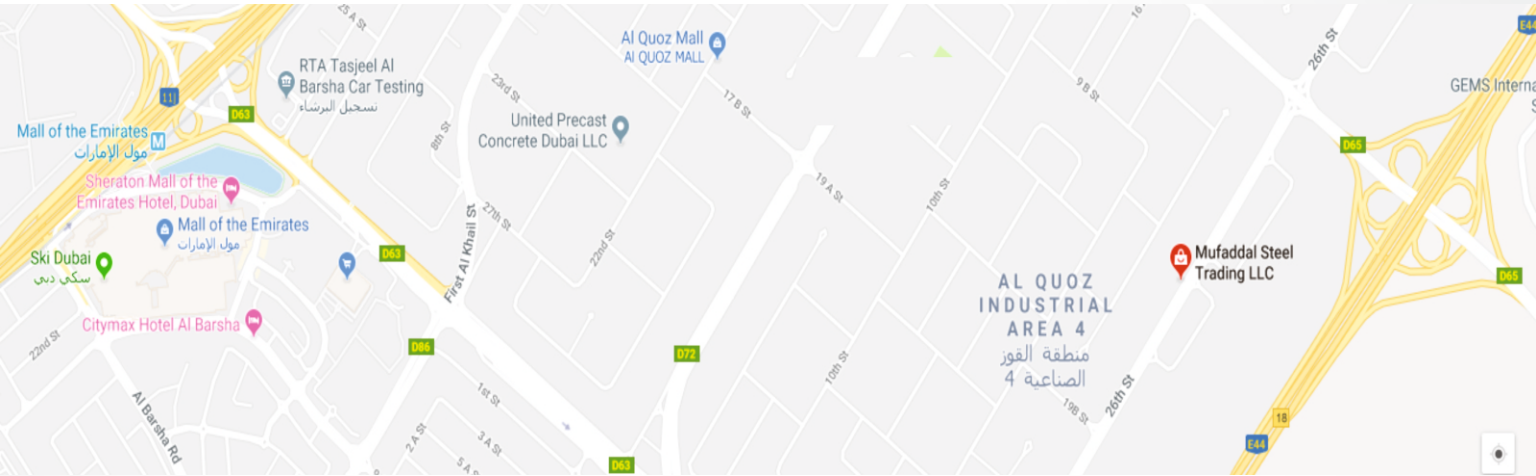
MOB. : +971 50 325 3786

E-mail : siraj@mufaddalsteel.com

Mufaddal Steel Trading LLC (Branch - Sharjah)

ADD. : Plot No. 916, Near ENOC Petrol
pump, Sajja Industrial, Sharjah,

MOB. : +971 52 923 5527



THANK YOU

www.mufaddalsteel.com



scan qr code and download brochure



scan qr code and download location